

Developer



Corporate Address

A101/02, The Elements by Vardhman
Kachna, Raipur

E sales@vardhmandevelopers.com

W vardhmanvillas.com

Site Address

The Richmond Park
Kachna, Raipur

P 8889996311, 8234822222

E sales@richmondpark.in

W therichmondpark.in

RERA No.: PCGRERA140324001748 | <https://rera.cgstate.gov.in/>

Disclaimer This is not an offer or invitation for offer. Furniture & fixtures shown are not part of the offer. The brochure is purely conceptual. Information included in the brochure including elevation details, specifications, dimensions, designs, layouts and rendered images are strictly provided for representative and illustrative purposes, and are subject to modification.

Concept & Design by: BethBee.in



THE RICHMOND PARK

inspired by
Bird & Windsong



~Scarlet minivet bird
to your child*



I WISH I HAD MET YOU
LAST SUMMER
WE WOULD HAVE
DONE RIYAAZ TOGETHER

*often found in the neighbourhood of Raipur



*The winds flow majorly from the southwest direction



I WISH I HAD MET YOU
IN THE SOUTH
WE COULD HAVE HAD
A LITTLE MORE TIME TO
PLAY WITH YOUR HAIR

~Southwest wind*
to your sister



Artist's impression

PRESENTING



THE RICHMOND PARK

inspired by
Bird & Windsong

In Kachna, Raipur, a plotted neighbourhood is taking shape where the birds and the song of the winds are waiting to be your neighbours. The Richmond Park offers plots inspired by the melodies of nature and the gentle embrace of serene surroundings.



SPRAWLING OVER
11.75 ACRES OF LAND



DIFFERENT PLOT SIZES



EXCLUSIVELY DESIGNED
MASSIVE CLUB HOUSE



VERDANT GREENSCAPES



147 RESIDENTIAL PLOTS



MAIN ENTRANCE GATE

I WISH I HAD
FOUND MY PLACE
IN THIS SOIL
WE WOULD HAVE
SO MANY CORNERS
TO CALL OUR OWN



~The blue-eared
kingfisher to your
younger brother

There's a plot size for every family and their needs, from basic to premium. Each plot is open, airy, designed according to Vastu, welcoming sunlight and the soothing winds, accompanied by the neighbours as birds from all sides.

Normal Plots: 1500 to 2400 sq. ft.

Larger Plots: 3200 to 3600 sq. ft.

A total of 147 Residential Plots

Green Landscapes

Security Features



I WISH YOU TO GLIMPSE
THE INSPIRATION WITHIN THIS PLAN



SO, WE COULD REVEAL SPACES
THOUGHTFULLY CREATED FOR YOU





Artist's impression



DRIVEWAY



I WISH I HAD MET YOU
 AT THIS CROSSROAD
 WE WOULD
 HAVE EXPLORED
 EVERY HIDDEN
 CITY SPOT TOGETHER



Not To Scale



Scan for location

Nestled in Kachna, Raipur, this location offers the best of both worlds, modern conveniences at your fingertips and a serene escape from the city's hustle. Live where ease and tranquility meet, right at the peak of comfort and peace.



LOCATION HIGHLIGHTS



Transportation

Raipur Railway Station	9.0 kms
Raipur Airport	17.0 kms
Raipur Bus Stand	10.0 kms



Hospitals

Heritage Hospital	3.4 kms
MGM Eye Institute	5.0 kms
Balaji Hospital	6.4 kms
Narayana Hospital	7.0 kms

Close Proximity

Shankar Nagar	3.9 kms
Avanti Vihar	5.0 kms
Pandri Market	7.9 kms
Mowa	7.5 kms
Saddu	4.6 kms
Telibandha	6.4 kms



Educational Institutions

Jack & Jill	3.5 kms
Delhi Public School	9.0 kms
N.H. Goel	9.1 kms
R.K. Sharda Vidya Ashram	18.4 kms



Malls

Decathlon	4.9 kms
Magneto Mall	5.4 kms
Ambuja Mall	5.8 kms
City Centre Mall	7.1 kms
City Mall 36	7.8 kms



I WISH YOU COULD SEE
THE SUNBEAM DANCE
WE WOULD
BASK TOGETHER, ONE
AUTUMN AFTERNOON

The design at Richmond flows like a sweet melody, blending beauty with immersive architecture, creating an experience that captivates your senses and brings your plot to life.



~The sunlight
to your father reading newspaper

- ★ Grand Entrance Gate
- ★ Landscape Amenities
- ★ Water fountain at central round about
- ★ Exposed brick cladding in The Club Entrance
- ★ Indoor Club House Amenities





Artist's impression



ROUNABOUT WITH WATER FOUNTAIN

I WISH
I COULD STAY LONGER
WE WOULD HEAR
THE WHISPERS
OF THE LEAVES

~A honey bee
to your grandmother reading a book beneath the tree

The different types of green landscapes and the music they offer to your ears is truly an immersive experience one could ask for.

GAMES ARENA

Outdoor Children's Play Area

SPORTS ARENA

Multipurpose Play Court

HEALTH & FITNESS

Yoga & Meditation Zone
Accupressure Pathway
Jogging Track with Pathway
Herbal Garden

ENTERTAINMENT

Bonfire
Amphitheater
Gazebo

LEISURE

Senior Citizen Plaza
Temple
Landscaped Garden
Water Fountain
Corner Seating Area
Green Mounds of Varying Height





TEMPLE



LANDSCAPED GREEN VIEW

Artist's impression



AMPHITHEATRE

Artist's impression



MULTIPURPOSE COURT

Artist's impression



KIDS' PLAY AREA

Artist's impression



YOGA & MEDITATION ZONE

Artist's impression



CORNER SITTING AREA

Artist's impression

~The wind to you while you jog

I WISH I COULD
VISIT YOU DURING
HOLIDAY BREAK
WE WOULD HAVE
SOME WE-TIME

A space where the melody of birds isn't just heard but felt in every breath. The vibrant, triple-height games and sports room fuels your mornings with unstoppable energy as you go about your day.

GAMES ARENA

Card Room
Indoor Games Room
(Table Tennis, Pool Table,
Chess, Carrom, Video Games)
Indoor Kids' Play Area

SPORTS ARENA

Indoor Badminton Court

HEALTH & FITNESS

Gymnasium
Swimming Pool
Kids' Swimming Pool
Steam Bath (Male & Female)
Jacuzzi

ENTERTAINMENT

Mini Theater
Banquet Hall with Kitchen
Party Lawn

LEISURE

Massive Club House
Club House Lobby
2 Guest Bedrooms
Library
Chit-Chat Corner

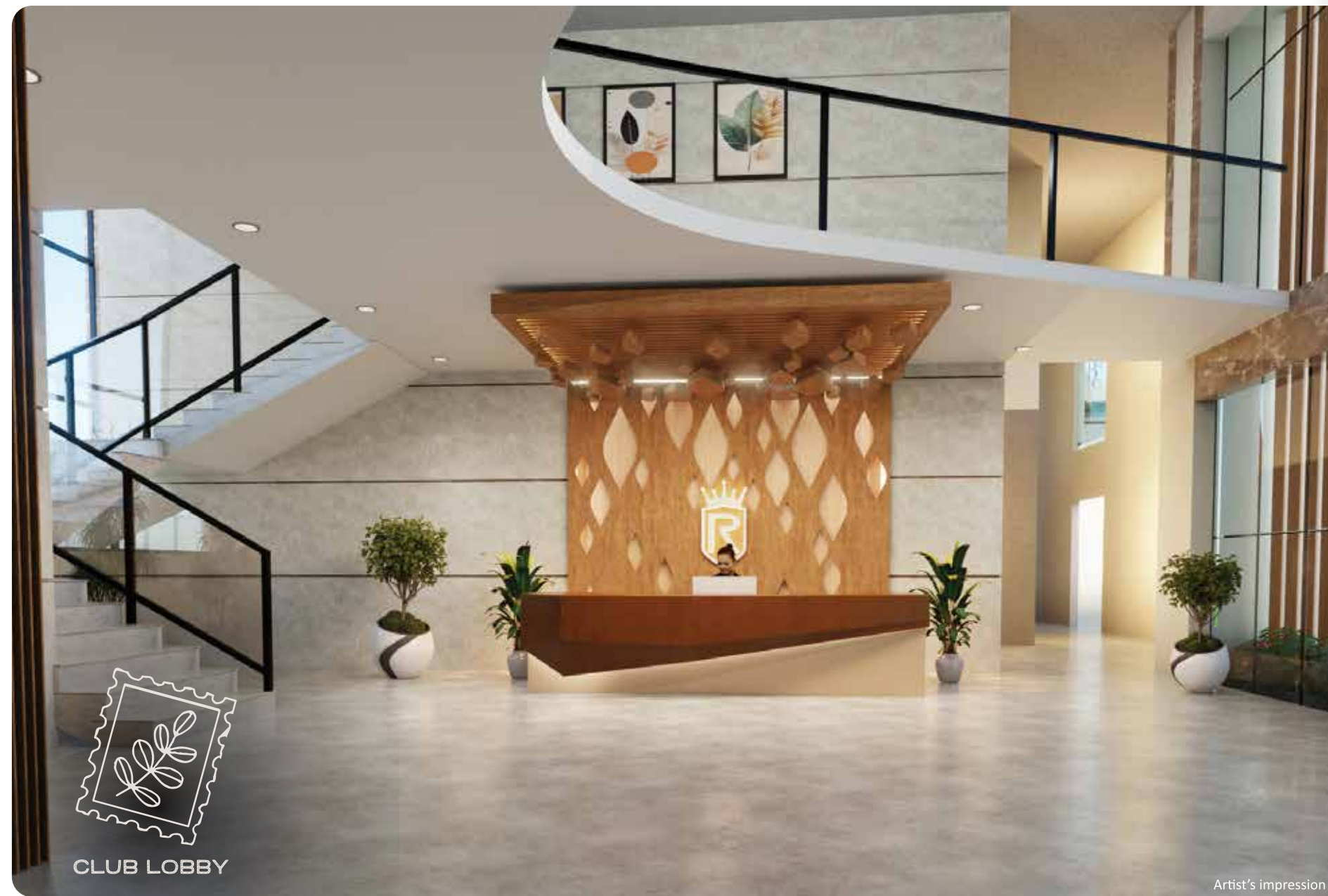




Artist's Impression



CLUB HOUSE



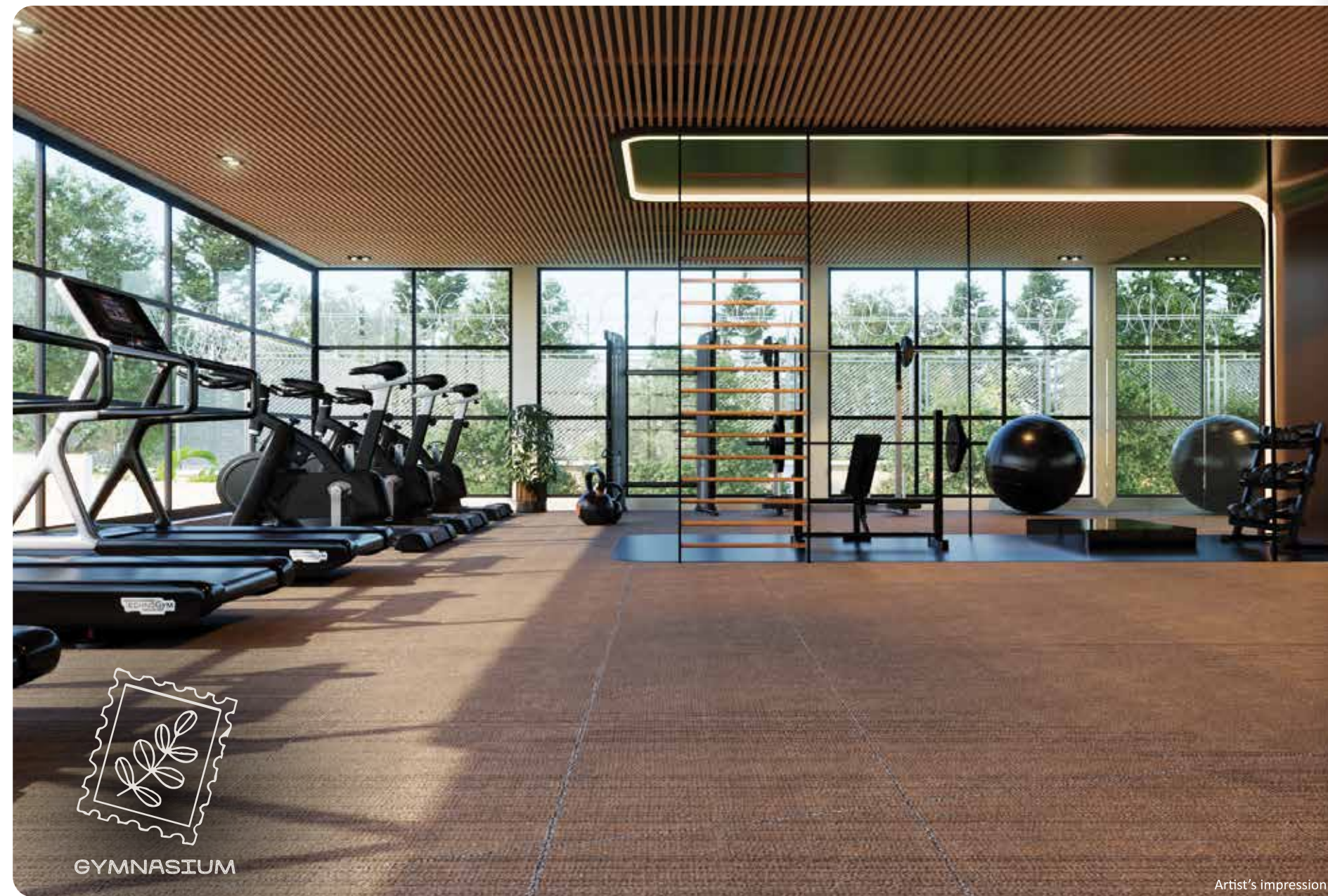
CLUB LOBBY

Artist's impression



SWIMMING POOL

Artist's impression



GYMNASIUM

Artist's impression



CARDS ROOM

Artist's impression



KIDS' GAMES ROOM

Artist's impression



INDOOR GAMES ROOM

Artist's impression



BANQUET HALL

Artist's Impression



PARTY LAWN

Artist's impression



AV ROOM

Artist's impression



BONFIRE AREA

Artist's impression

COMMON AREA
DG BACKUP

WATER
SOFTENER

SEWAGE TREATMENT
PLANT

CCTV COVERED
CAMPUS

FACILITIES

24X7
SECURITY

EV CHARGING
POINT

RAIN WATER HARVESTNG



ABOUT DEVELOPER

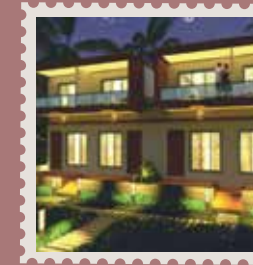


Since 2012, Vardhman Group has been committed to creating quality spaces that truly reflect customers' aspirations, guided by the philosophy of "building homes, not apartments."

With growing demand for elevated, luxury living, Vardhman Builders is launching a new residential plotting project that offers a resort-like retreat.

Designed for those who value privacy, space, and a nature-centric lifestyle, this project combines luxury with sustainability, providing a sanctuary from urban life.

Through this venture, Vardhman Group upholds its legacy of trust while embracing innovative, eco-friendly living solutions for modern buyers.



VARDHMAN HILL VIEW

Location

Gold Valley, Lonavala
Maharashtra

Type

3 BHK Bungalows

No of Bungalows 40

Start Date 2014

Completion Date 2016



VARDHMAN SKYLINE

Location

Junction of New Rajendra Nagar
and Canal Road, Raipur

Type

3 BHK and 4 BHK Apartments

No of Apartments 64

Start Date 2016

Completion Date 2021



VARDHMAN THE ELEMENTS

Designed For Higher Living

Location

Kachna Road
Raipur, Chhattisgarh

Type

Modern Row Houses

No of Bungalows 118





Architect
ETHIQUE ARCHITECTS & ASSOCIATES

Landscape Architect
VIKAS & NILIMA BHOSEKAR

Structural Consultant
ANSHUL BAJAJ & ASSOCIATES

MEP Consultant
ONEMEP SERVICES PRIVATE LIMITED

ANIMATION Visualiser
ANIMATION STUDIO

Branding
BE THE BEE

I WISH
YOU COULD ALREADY
BELONG HERE.



WE WOULD
MAKE THIS PLACE,
A HOME.



SCAN FOR
WALKTHROUGH